

IC Application Note No. S-3

Subject: Fluoride, Chloride, Nitrate and Sulphate in potable Water

Summary: Determination of the anions in potable using anion chromatography with conductivity detection after chemical suppression.

Sample: Tap water from Herisau

Sample Preparation: Direct injection

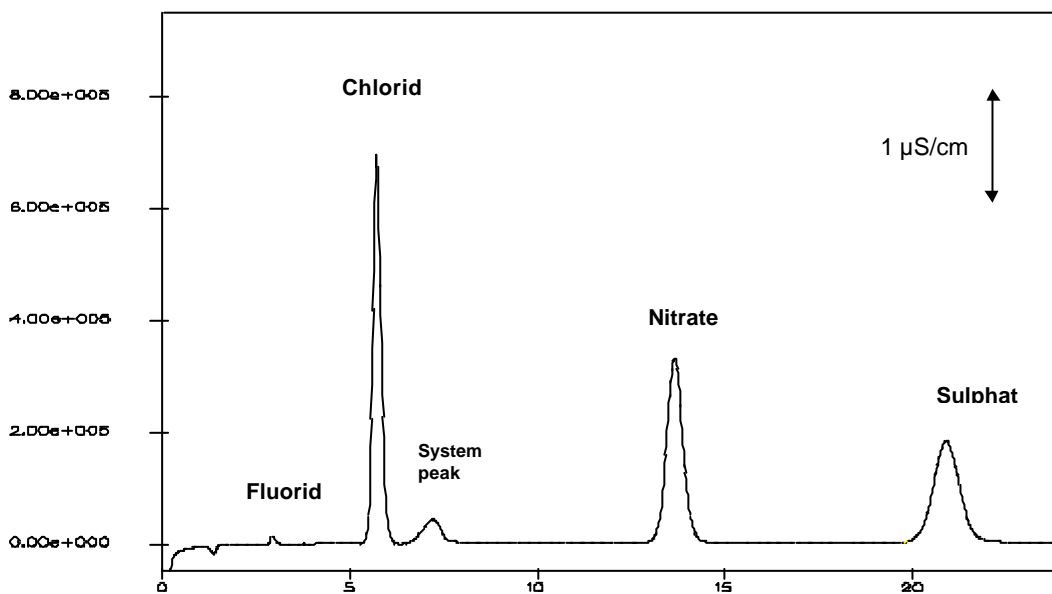
Column: 6.1006.100 Metrosep Anion Dual 2

Suppressor: Metrohm Suppressor Module

Eluent: 2.0 mmol/L sodium bicarbonate, 1.3 mmol/l sodium carbonate

Flow: 0.8 mL/min

Injection Volume: 20 μ L



Results:	F ⁻ mg/L	Cl ⁻ mg/L	NO ₃ ⁻ mg/L	SO ₄ ⁻ mg/L
	0.05	5.7	9.6	6.9

